

ELEVATED URBAN PARK

Using Lynch's techniques of landscapes with an emphasis on creating distinguishable nodes, the elevated urban park will create a place of social gathering. This is done through a focus on changing the trajectory of people entering the kulturforum. Instead of walking along the road, the paths are now pulling people towards the center of the park, which evenly then distributes pedestrians to other monuments on the site.



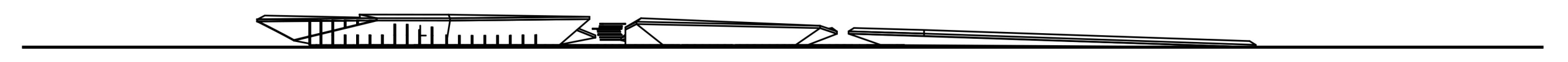
KULTURFORUM SITE PLAN
SCALE: 1:1000



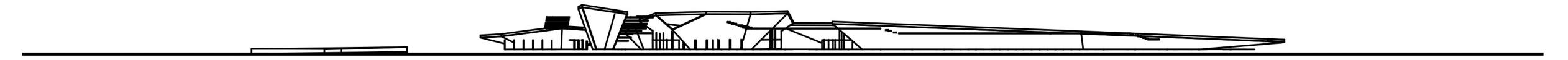
KULTURFORUM SECTION 1
SCALE: 1:1000



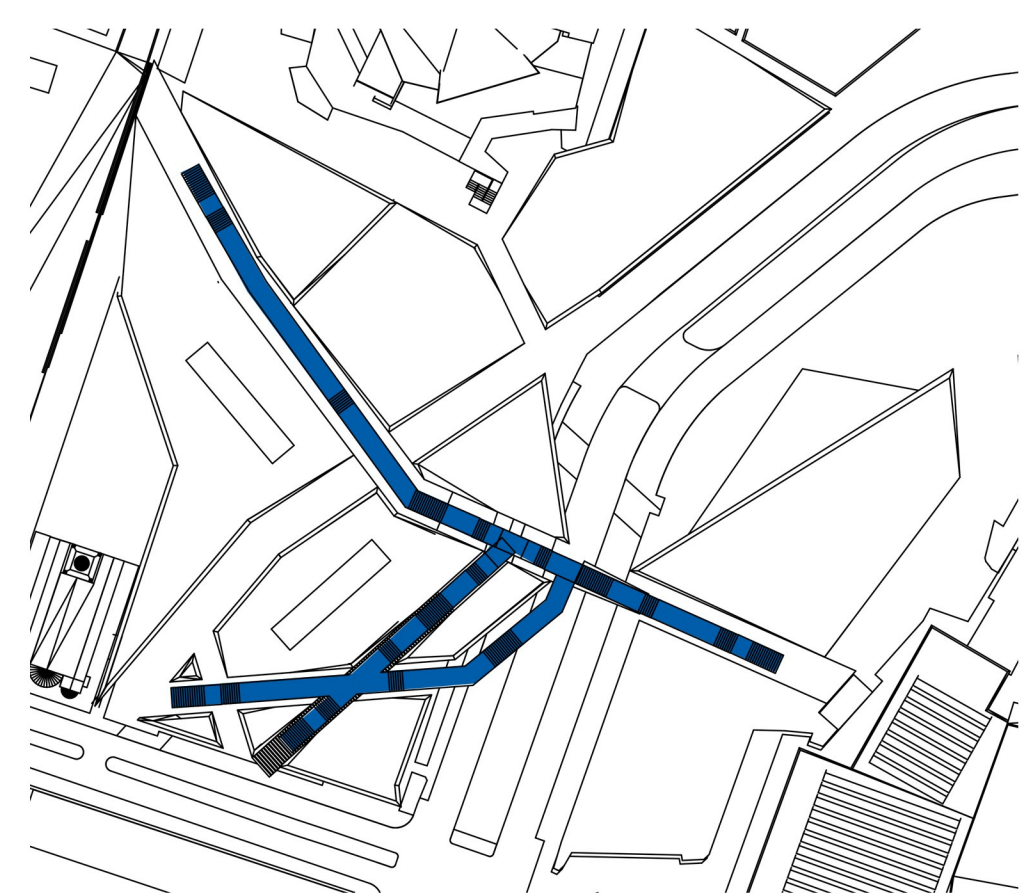
KULTURFORUM SECTION 2
SCALE: 1:1000



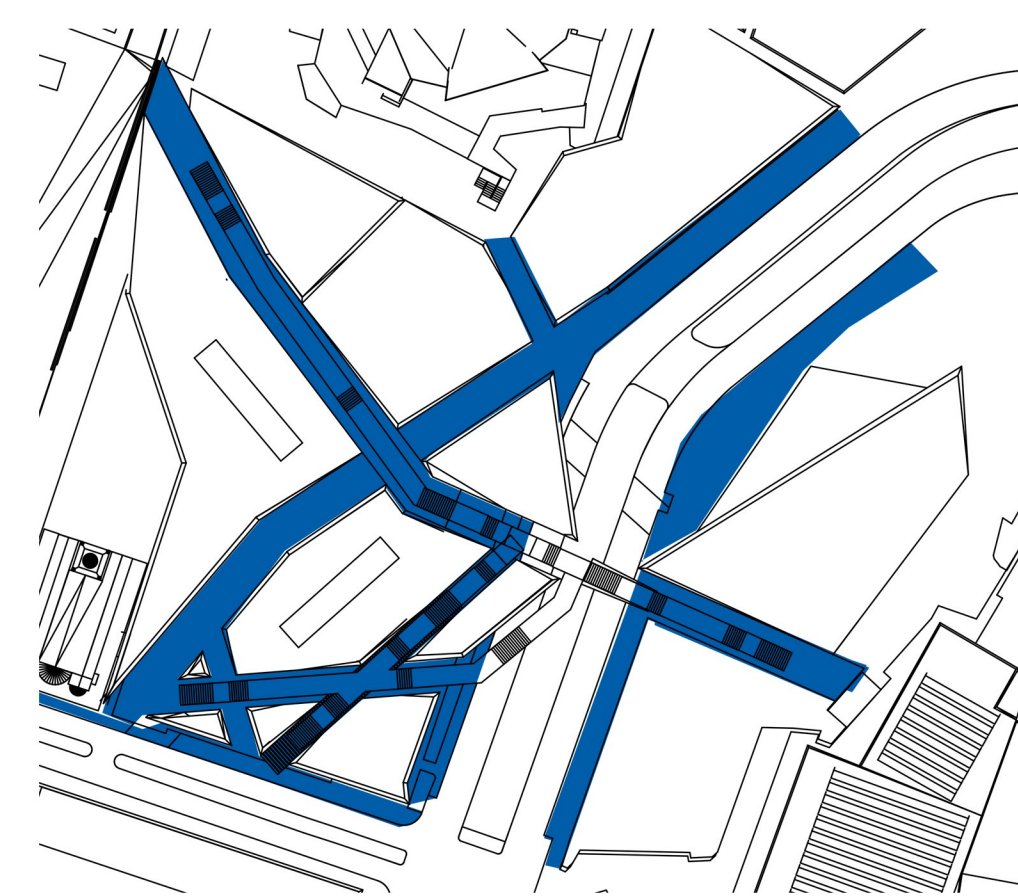
KULTURFORUM SECTION 3
SCALE: 1:1000



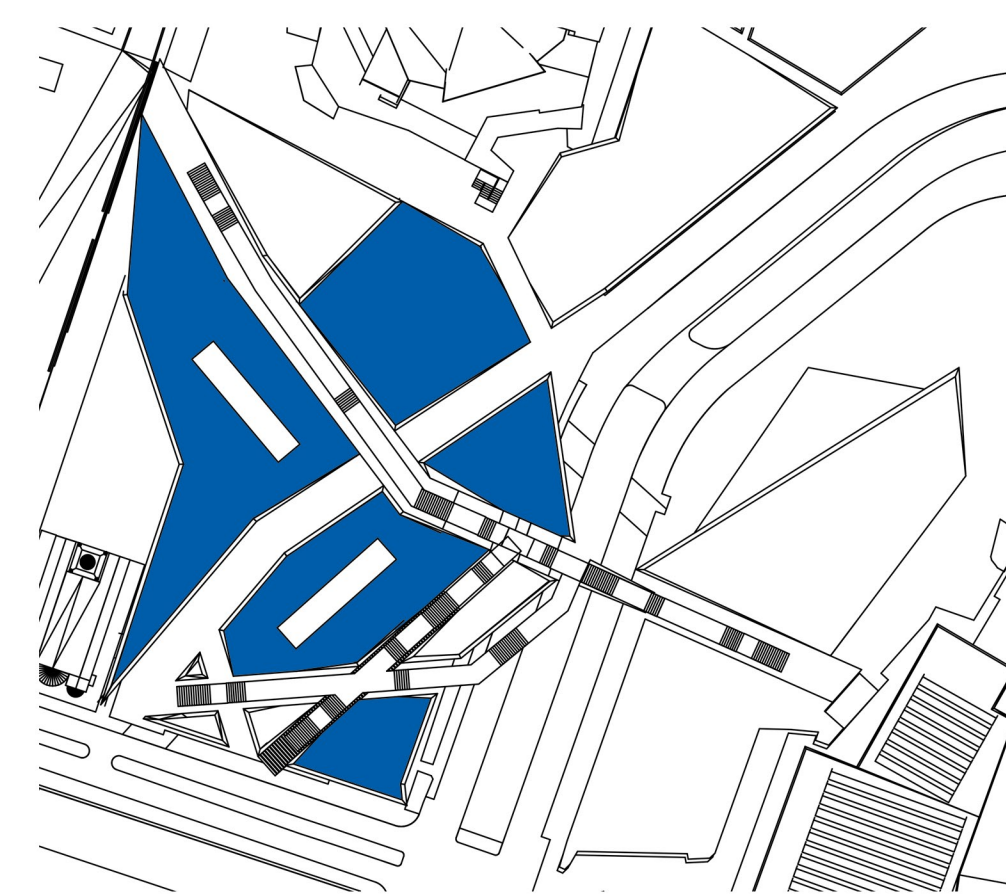
KULTURFORUM SECTION 4
SCALE: 1:1000



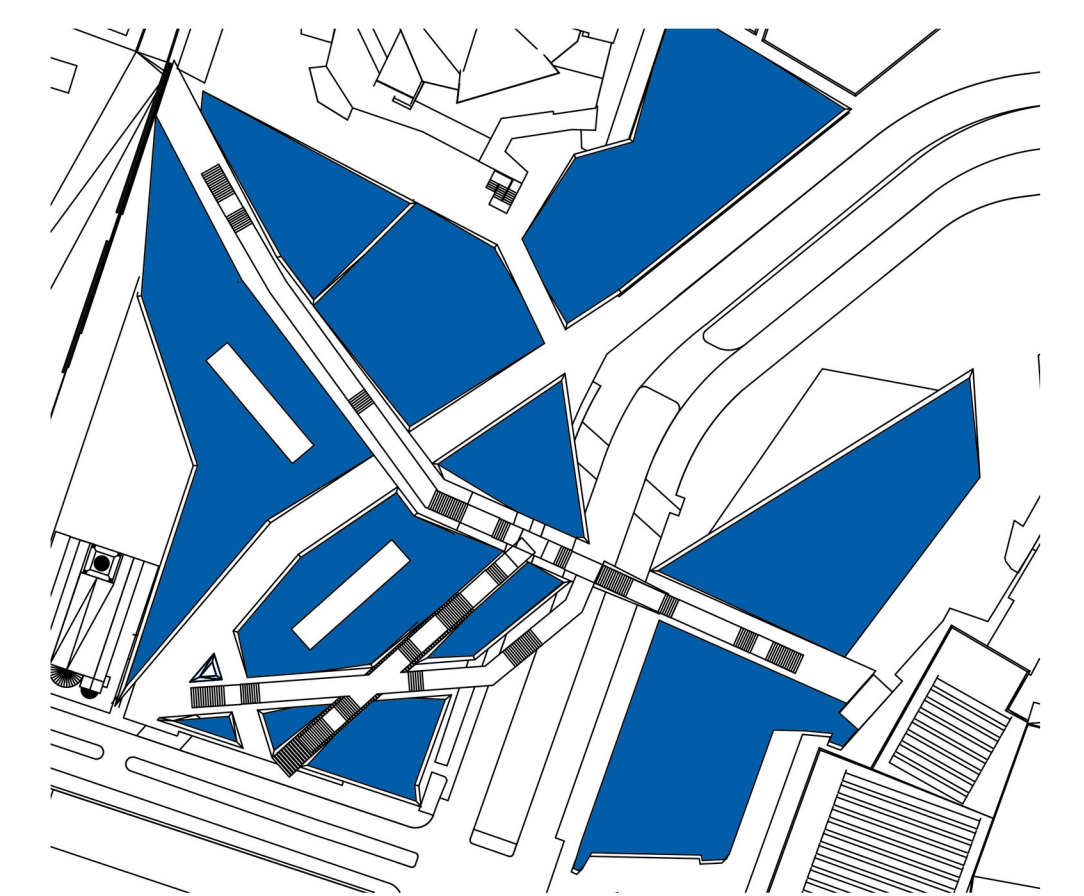
UPPER LEVEL BRIDGE TRAFFIC



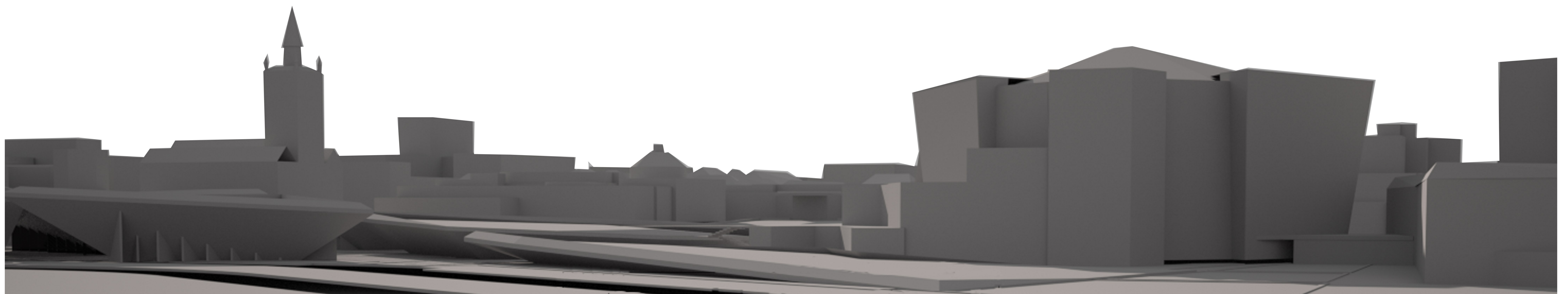
LEVEL 1 PEDESTRIAN TRAFFIC



SHOPPING CENTERS



ELEVATED PARK



VIEW FROM POTSDAM